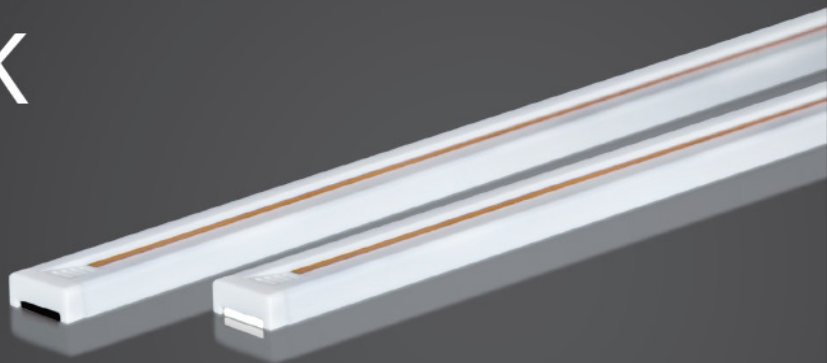


Power Track for Shelving Lighting



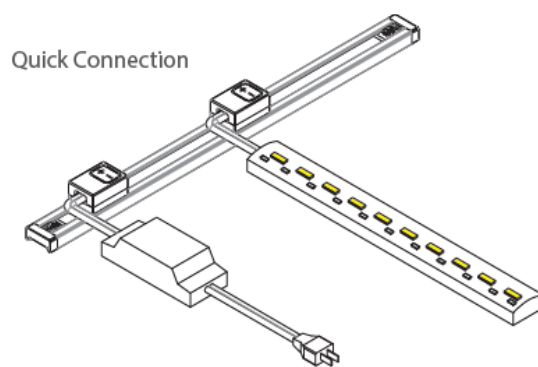
POWER TRACK

For shelving lighting



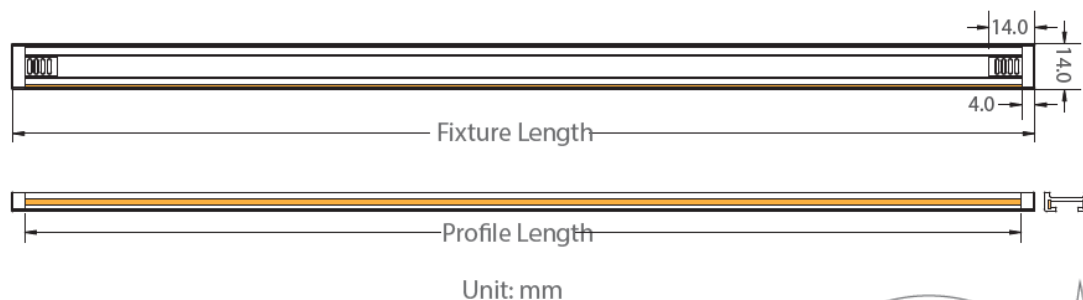
Features:

- Easy installation, easy adjustment.
- Ready to use without the need of any tools.
- The smallest power track bar, only 14mm width.
- Three different mounting ways.
- Multiple accessories and feeds for your exhibe installation.
- 3 year warranty.



Specification:

-Mechanical Structure



Standard Power Track lengths 1000mm / 1500mm / 2500mm
(can be cut down to any length, additional end caps can be supplied)
Available in White and Black color

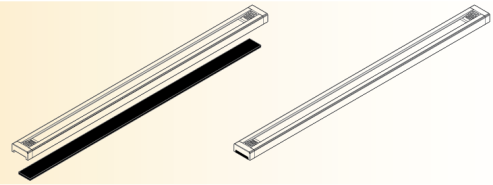
-Electric Properties

Electric Operation	DC
Input Voltage(nom.)	12V/24V
Input Current	Max.(A)
	8

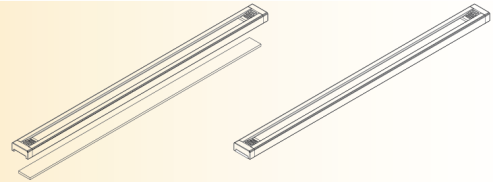
Installation:

-Mounting

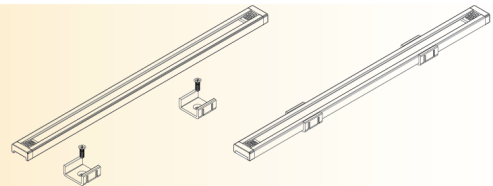
1. Magnetic Strip for Metal Shelf



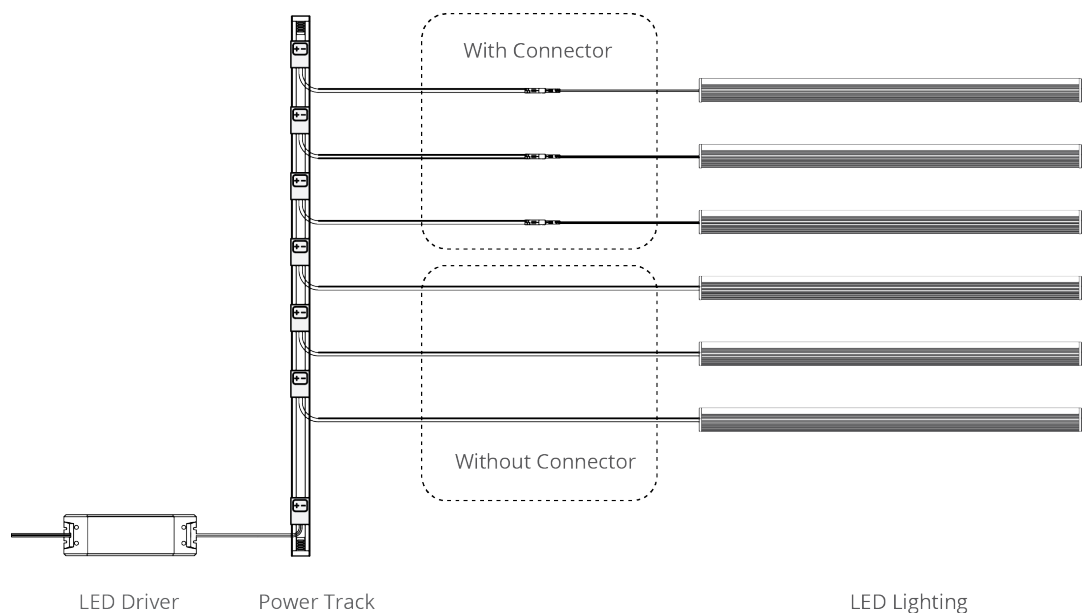
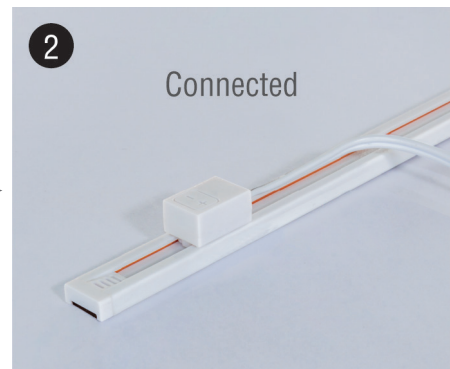
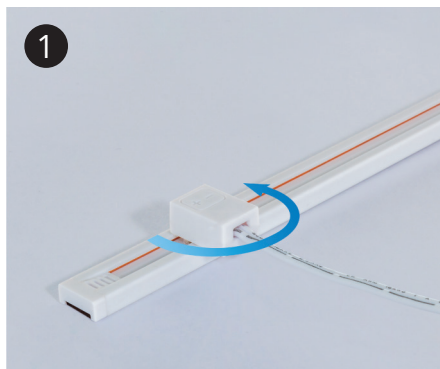
2. Adhesive Tape for Flat Surface



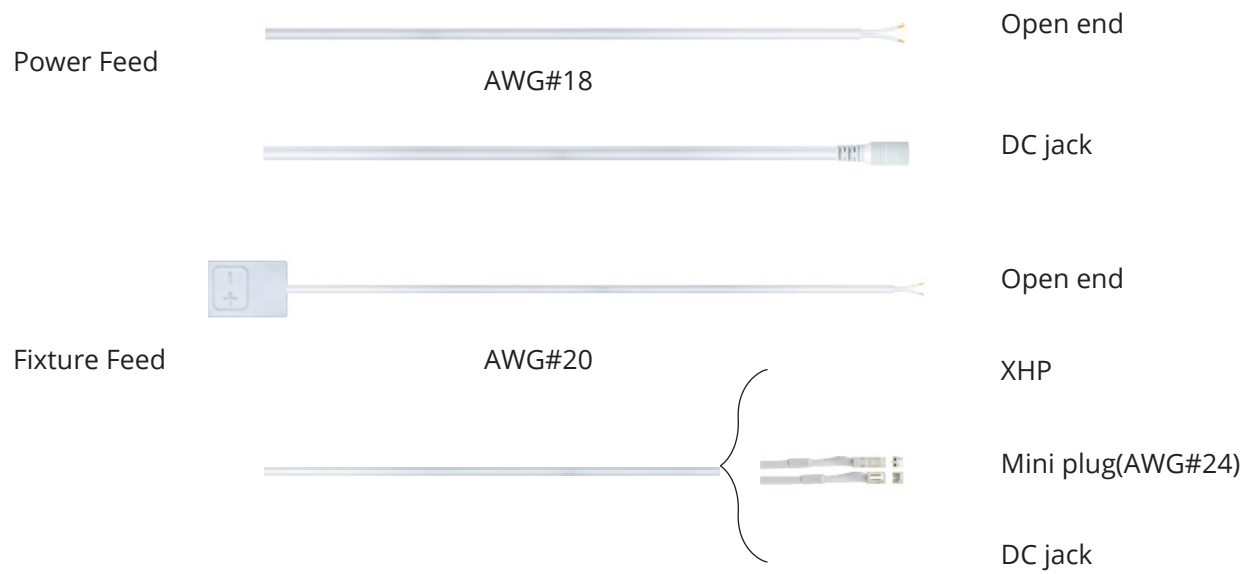
3. Plastic Clip for Wooden Shelf



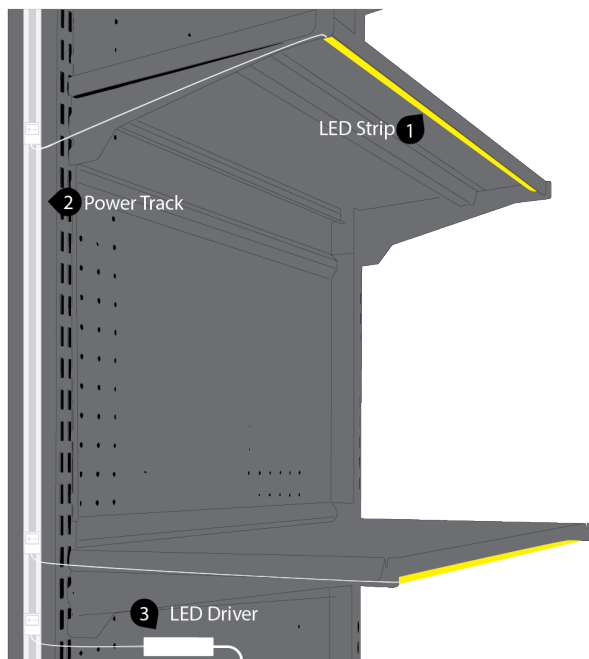
-Fitting Instructions



Connection Diagram:



Applications:



LUXX Light Technology

LUXX Light Technology (USA) Inc.

4425 S Kansas Ave
St. Francis, WI 53235
USA

info@luxx.com
www.luxx.com

LUXX Light Technology (Shenzhen) Ltd.

Building 8, 5th Floor, HuiDeBao
Industry Park
Bai Hua Yuan Road
Guang Ming New District,
Shenzhen
Guangdong, China, 518000

Phone: +86 755 27049942

info@luxx.cn
www.luxx.cn

LEDtec GmbH

Abelbachstr. 13
OT Steinhausen
33142 Bueren
Germany

Phone: +49 2951 93838-300
Fax: +49 2951 93838-399
info@ledtec.eu
www.ledtec.eu

Sun Electronics S.R.L.

Via Leonardo da Vinci 24/A
20094 Corsico (Milan)
Italy

Phone: +39 02 95327303
Fax: +39 02 95327091
info@sunleds.it
www.sunleds.it



© Copyright 2021. All rights reserved by LUXX Light Technology.

Issue no. G-SH-EN-2100

All information stated is correct at the time of printing and subject to changes